

GREAT CENTRAL RAILWAY

## VOLUNTEER WITH US



DISCOVER THE HEART OF THE GCR  
JOIN OUR VOLUNTEERS

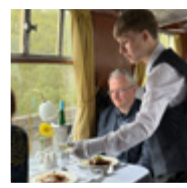


GCRAILWAY.CO.UK

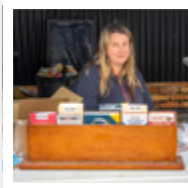
### VOLUNTEERING OPPORTUNITIES

There's something for everyone across the railway – explore the many ways to get involved:

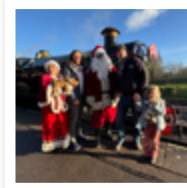
.....



Catering



Customer Service



Events



Fundraising & Marketing



Footplate



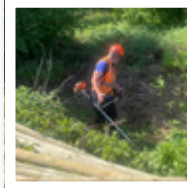
Gardening



Guarding & TTI



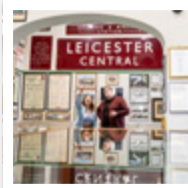
Interpretation



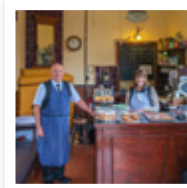
Lineside Clearance



Maintenance & Restoration



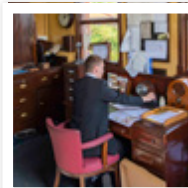
Museums



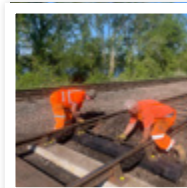
Retail



Signalling & Telecoms



Stations



Permanent Way



### START YOUR JOURNEY WITH US

Ready to get involved? We'd love to welcome you aboard.

### FIND OUT MORE

#### ONLINE



For more information about volunteering and to see the opportunities available to you, please visit our volunteering page.

.....  
[gcrailway.co.uk/support/volunteering/](http://gcrailway.co.uk/support/volunteering/)

#### EMAIL US



Alternatively, please email the Volunteer Support Team or enquire at one of our stations.

.....  
[volunteers@gcrailway.co.uk](mailto:volunteers@gcrailway.co.uk)

### GENERAL CONTACTS



Website [gcrailway.co.uk](http://gcrailway.co.uk)

.....  
Booking Office 01509 632 323

.....  
Great Central Road, Loughborough LE11 1RW



## BE A PART OF HISTORY

Discover the true heart of the Great Central Railway — our passionate volunteers.

While steam locomotives may steal the spotlight, it's the dedication of our volunteers that keeps everything on track.

Whether you dream of driving a locomotive, restoring wagons, shunting, helping at stations, cafes and shops, cleaning, maintaining engines, or supporting through fundraising — there's a role for you.

Be part of preserving the magic of steam and heritage. Your time and effort truly power the railway every single day. With over 600 volunteers giving their free time across a wide range of roles, joining us means becoming an integral part of the GCR family. Playing a crucial role in maintaining and operating our historic trains, ensuring our stations run smoothly, and helping us organise the memorable events and experiences our guests cherish, every volunteer plays a vital part.

Whether you're a seasoned professional or a newcomer eager to contribute, we welcome volunteers of all ages and backgrounds, with any level of experience to come and join our volunteering community!

## REASONS TO VOLUNTEER

Volunteering offers personal fulfilment, friendships, and a sense of purpose.

### FIVE GREAT REASONS TO GET INVOLVED

1

#### WE'RE A FAMILY

Join a welcoming and supportive community

2

#### SHARE AND LEARN

Use your talents and develop new skills

3

#### MAKE AN IMPACT

Help preserve our heritage for future generations

4

#### VERSATILE EXPERIENCE

Gain valuable, transferable experiences and skills

5

#### NEVER A DULL MOMENT

There's never a dull day at GCR; join us, have fun, and enjoy the vibrant atmosphere!

.....



## BENEFITS OF VOLUNTEERING

### FRIENDS MEMBERSHIP

As a volunteer you need to first become a member of Friends of Great Central Main Line. After six turns you will become a 'Working Friend'.

.....

### FREE TRAVEL

As a 'Working Friend' you can take advantage of free travel all year round on our standard passenger services.

.....

### DISCOUNTS

Utilise your membership to get discounts on dining trains and driver experiences.

.....

### FREE REFRESHMENTS

Whilst on duty benefit from Tea and Coffee and discounts on food.

.....

### COMMUNICATIONS

As a volunteer you will receive regular updates and communications via the "Great Central Railway Journal".

### FIND THE ROLE FOR YOU



Scan the QR code to learn more each role and to find one that works for you.

.....

[gcrailway.co.uk/support/volunteering/](http://gcrailway.co.uk/support/volunteering/)

